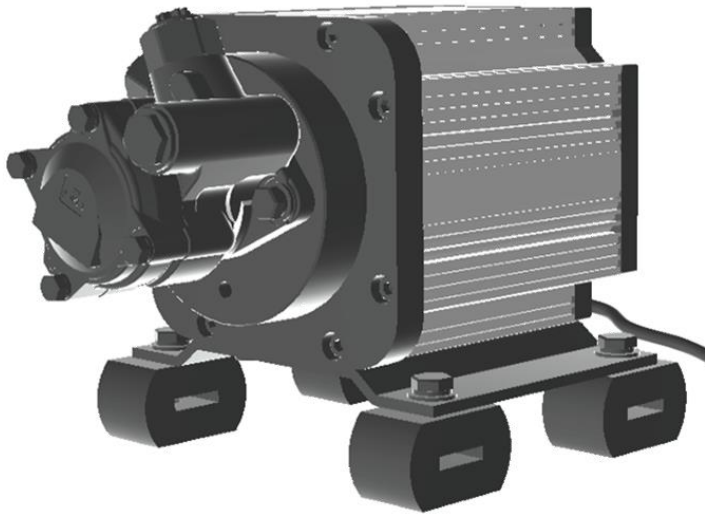


# Heavy Duty Electric Steering Pump



Coulomb  
Solutions

Proven in Thousands of  
Commercial EVs & HEVs

- **Highly Efficient**
- **Permanent Magnet Motor**
- **Reservoir Included**
- **Optional matched 5.5kW 600V Inverter (eAD5.5HV)**
- **Compact Design**
- **Very Low Noise**
- **Meets Conventional Truck & Bus Requirements**
- **Extremely Low Maintenance**

## GENERAL SPECIFICATIONS

<b>Model #:</b>	<b>eHPS3.0HV</b>
<b>Motor Type:</b>	<b>3.0kW Highly Efficient PM</b>
<b>Inverter Voltage:</b>	<b>500-750 VDC</b>
<b>Inverter Control</b>	<b>CAN 2B</b>
<b>Rated Flow at Pressure:</b>	<b>4.2gpm (16lpm) at 1450 psi (10MPa) continuous 4.2gpm (16lpm) at 2755psi (17MPa) for 2 minutes</b>
<b>Peak Flow/Pressure:</b>	<b>4.2 gpm/2900 psi (16lpm/20MPa)</b>
<b>Ambient Temperature:</b>	<b>-40C to 85C</b>
<b>Environmental Protection:</b>	<b>IP67</b>
<b>Weight:</b>	<b>84.7 lbs (38.5 kg)</b>
<b>Dimensions:</b>	<b>16.3"L x12.7"W x 10.0"H (414x323x254mm)</b>