



All-electric MSC Reefer System Powered by Solar



The Solar-Electric Reefer from Proven Industry Leaders:



The Thermally-efficient, Eco-friendly Refrigerated Haul.

The Wabash Molded Structural Composite (MSC) Reefer is the most thermally efficient, lightest and most durable reefer on the road. With our eNow™ and Carrier® partnerships, you get a zero-emission, more energy efficient, and lower operating cost refrigerated transportation solution.

System Components

Wabash MSC Technology

The Wabash National reefer, with our proprietary MSC technology, improves thermal efficiency up to 30%, reduces weight and extends product life for higher return on investment.

eNow Rayfrigeration™ System

eNow's all-electric, solar-based power system, enables a full 12-hour route duration without employing a reefer engine to power the reefer unit.

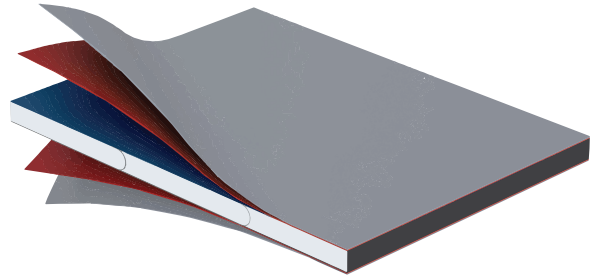
Carrier Vector™ 8100 Reefer

Carrier's best-in-class, all-electric reefer unit reduces maintenance and eliminates noise, emissions and fuel consumption associated with traditional diesel TRUs.

System Details

Wabash National MSC Reefer

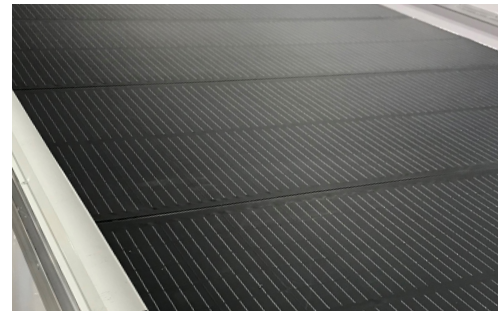
MSC Technology	Foam-insulated core, encapsulated in a polymer fiber-reinforced shell with a protective gel coat surface
Thermal Performance	Up to 30% more efficient than the conventional reefer
Weight	Lightest refrigerated semi-trailer on the market <ul style="list-style-type: none"> • Increased cube/load • Expanded backhaul options • Saves fuel
Structure	<ul style="list-style-type: none"> • 2X puncture resistance • Industry-leading 21,000lb floor rating, optional 24,000lb floor • No corrosion points are areas for water intrusion and weight gain



Wabash MSC Technology

eNow Rayrefrigeration System

Advanced Design	Optimized for heavy-duty commercial transportation via the eNow 'solar pioneer' experience
Solar Unit	Includes up to 6.5kW of 1/8" thin, weather-proof, high-performance solar modules
Battery	eNow Li-ion 60 kWh 48V, with availability to size up or down to meet your needs
Modular Power Unit	<ul style="list-style-type: none"> • MPPT charge controller • Power inverter • Wire harness • Protective enclosures
Monitoring Unit	Includes a CANBus-based, touch-screen diagnostic and monitoring system with remote access
eTRU Charging System	208V or 480V connections available to suit your needs



Rayrefrigeration Solar Panel Roof System

Carrier Vector 8100 Reefer Unit

Environmental	<ul style="list-style-type: none"> • All-electric • Zero-emissions • No fuel consumption • Low/no noise solution
Orbcomm Telematic System	<ul style="list-style-type: none"> • Data collection • Temperature management • Maintenance • Logistics
Tru-Demand™ Energy Management Logic	Efficiently regulates power draw to extend runtime and save energy when connected to shore power



Carrier Energy Monitoring and Control

Call 855-530-3870

Email Sales@wabashnational.com

Online wabashnational.com

Specifications are accurate at the time of publication, and are subject to change without notice.
 ©2020 Wabash National L.P. All rights reserved. Wabash® and Wabash National® are marks owned by Wabash National, L.P. All other trademarks and registered trademarks are property of their respective owners.

