

The background of the entire page is a blue-toned photograph of a modern city at night. Several skyscrapers are visible, their windows and structural frames illuminated with bright blue light. In the foreground, a road with white lane markings stretches into the distance. Overlaid on the image are various geometric elements: a network of thin white lines and dots in the upper left, and several translucent blue circles and lines in the lower right. A large, semi-transparent white rectangle is positioned in the center-left, containing the main title text.

BALLARD®

Fuel Cell Power for a Sustainable Planet

Power to Change the World®



Ballard is a world leader in the design, development and manufacture of proton exchange membrane (PEM) fuel cells. Our proprietary technology, combined with our extensive stack design and system integration capabilities, deliver unparalleled customer value.

Ballard's fuel cell products provide solutions to some of the world's most pressing environmental issues and opportunities.

Motive Power Modules



Electrification
of transportation

Backup Power Systems



Resiliency of
critical infrastructure

Distributed Power Generation Systems

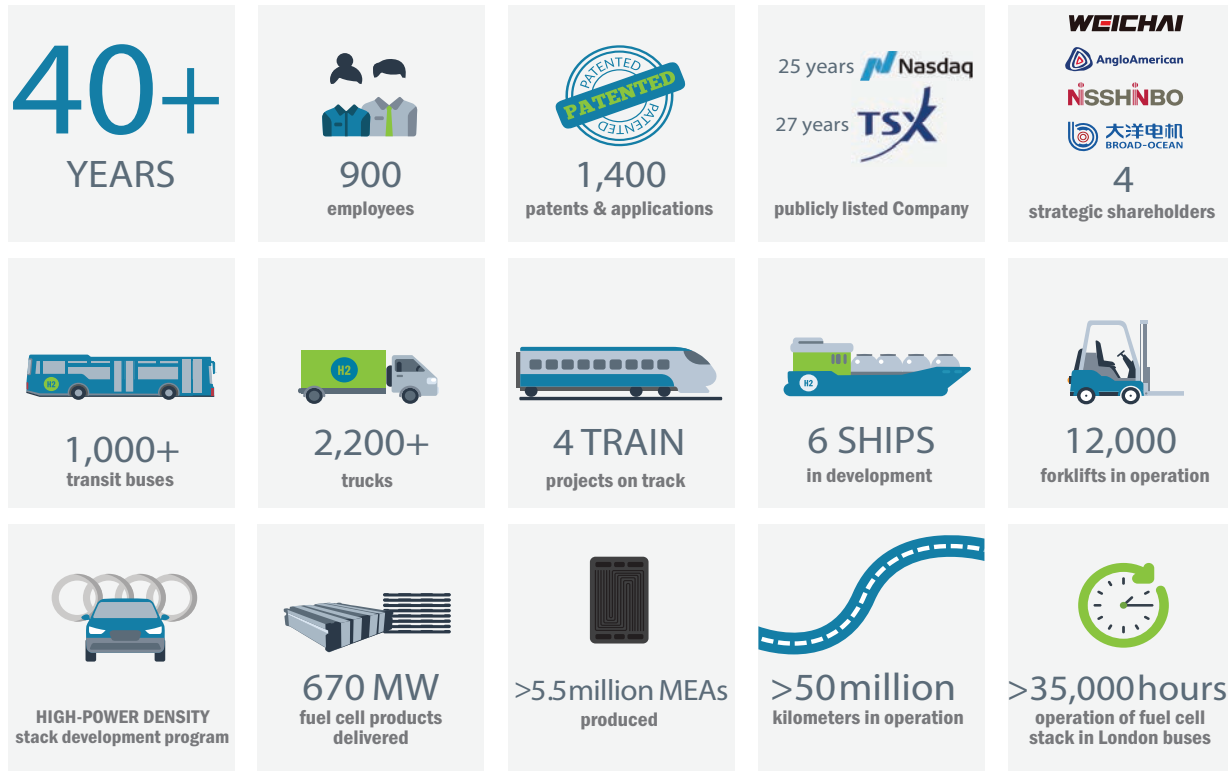


Power generation
from renewable energy

POWERED BY BALLARD

Choosing the right fuel cell technology partner will ensure your journey toward zero-emissions is a success. Ballard's team of experienced engineers, our intellectual property, and our state-of-the-art facilities have driven us to the forefront of fuel cell technology leadership. The journey starts here.

Ballard by the numbers







COMMITMENT TO SUSTAINABILITY

Emission reduction and fighting climate change are in the DNA of our team at Ballard. We're passionate about delivering fuel cell power for a sustainable planet. For over 40 years, we've been developing fuel cell technology to power high performing, zero-emission mobility.

We also need to lead by example and reduce our company and product carbon footprints to ensure that we deliver sustainable clean energy solutions. **Ballard is committed to being carbon neutral by 2030.**

Ballard Product Range

Vertically integrated value chain from component design to complete fuel cell system integration and services.

| PRODUCT LINES | | APPLICATIONS |
|--|--|---|
| <div>low</div> <div>LEVEL OF INTEGRATION</div> <div>high</div> | Fuel Cell Components Components designed to specific application requirements: » Membrane electrode assemblies (MEA) » Bipolar plates |  |
| | Fuel Cell Stacks Air cooled and liquid cooled stacks ranging in power from 400W to 140kW. |  |
| | Fuel Cell Modules Heavy duty power modules ranging from 30kW to 200kW. |  |
| | Fuel Cell Systems Reliable, flexible backup power from 1.7kW to 60kW at critical infrastructure sites. Distributed power generation systems scalable from hundreds of kilowatts to megawatts. |  |

CUSTOMER SERVICE

Ballard's team provides customers with high-value services to accelerate fuel cell development and deployment efforts, including engineering services, applications engineering, training and after sales support.



**We deliver fuel cell power
for a sustainable planet**

BALLARD®

Ballard Power Systems Inc.

9000 Glenlyon Parkway
Burnaby, BC V5J 5J8 Canada
(P) +1-604-454-0900

www.ballard.com
www.zeroemissionbus.org